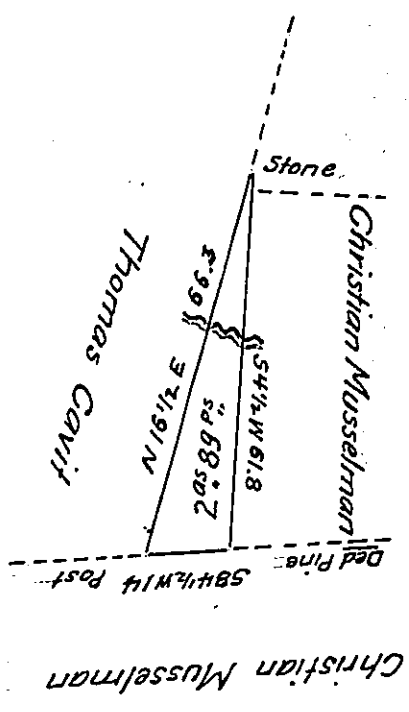


FORM NO 1.

Bearings	Dist.	N.	S.	E.	W.	E.D.D.	W.D.D.	Mult.
S 4 1/2 W	61.8		61.91		4.87	13.94		00.00 E.
S 84 1/2 W.	14.		1.35		13.94		18.81	18.81 W.
N 16 1/2 E.	66.3	63.26		18.81		4.87		13.94 W.
		63.26	63.26	18.81	18.81			

1881 W.
 135 5.
 9405
 5643
 1881 N.
 253935

13.94 W
 63.26 N
 83.64
 2788
 4182
 8364 S
 8818444
 253935
 1/2 8564509
 169.6 4 2822.54 (2 As. 89 Pts.
 3392
 89.0



Draught of a tract of land Situate in Delaware township, Juniata County. Containing Two Acres and Eighty Nine Perches and the Allowance of Six per Cent for Roads &c. Surveyed for George T. Frey August 7th 1873. in Pursuance of a Warrant dated July 24th A.D. 1873.

*J. Middogh
 Pr. J.W. Allen C.S.*

*To Robert B. Beath Esq.
 Surveyor Genl. of Penna*

IN TESTIMONY that the above is a copy of the original remaining on file in the Department of Internal Affairs of Pennsylvania, made conformably to an Act of Assembly approved the 16th day of February, 1833, I have hereunto set my Hand and caused the Seal of said Department to be affixed at Harrisburg, this seventh day of May 1908

Henry Houch
 Secretary of Internal Affairs.